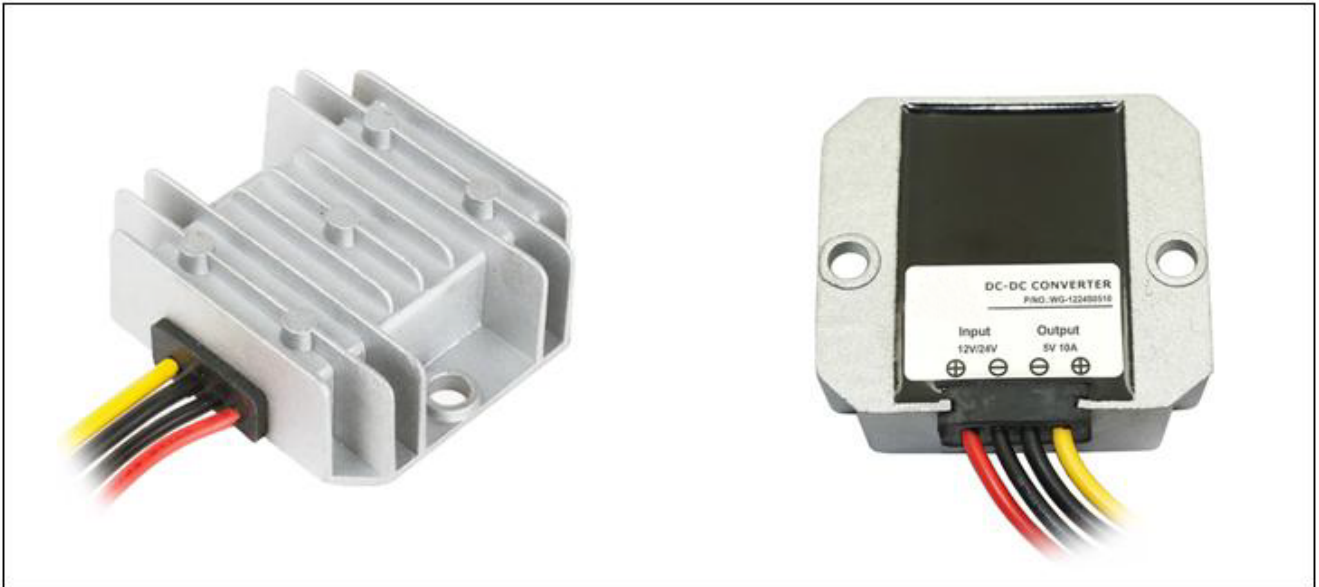


Input voltage	Output voltage	Output current	Output power	Efficiency	Size
8-36V DC	5V DC	10 Amps	50 Watts	92%	64*57*22mm



#### Features

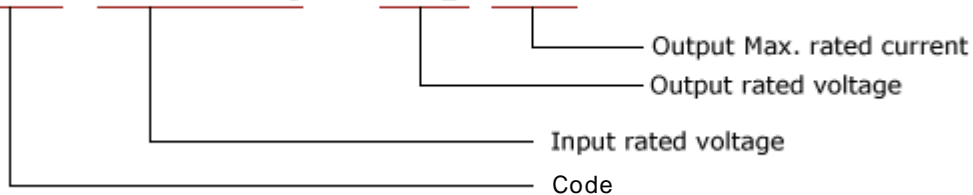
- Design meeting RoHS / CE
- High efficiency: 92% ( @ 12V input )
- Non-isolated between input and output
- Internal capacitor: NCC (high reliability)
- 100% full load burn-in test
- Short circuit, Over load, Over temperature protections
- Waterproof level IP68
- 1 Year warranty

#### Applications

- Trucks
- Forklifts
- Buses
- Logging Vehicles
- Electromotor
- Telecommunications
- Boat & Yacht
- LED Marketplaces and so on..

#### Model naming method

**WG-1224S0510**



**Specifications**

Model	WG-1224S0510		
Input	Rated voltage	V	12/24
	Voltage range	V	8-36
	Efficiency (type)	%	92% @ 12V input; 90% @ 24V input
	Positive cable (red)	AWG	18 @ 16.5cm length
	Negative cable (black)	AWG	18 @ 16.5cm length
Output	Voltage	V	5
	Max. rated current	A	10
	Max. rated power	W	50
	Voltage regulation	%	±1
	Load regulation	%	2
	No load loss	W	0.15
	Ripple & noise	mV	100
	Positive cable (yellow)	AWG	16 @ 16.5cm length
	Negative cable (black)	AWG	16 @ 16.5cm length
Environment	Working temperature	°C	-35 ~ +80
	Working humidity	RH	10% ~ 90%
	Storage temperature	°C	-40 ~ +85
Function	Short circuit protection		YES
	Over load protection		YES
	Waterproof		IP68
	Over temperature protection		YES
	Over voltage protection		YES
Mechanical	Weight	g	110
	Size	mm	64*57*22
Other	Cooling		Free air convection
	Packaging		White box

**Dimension**

