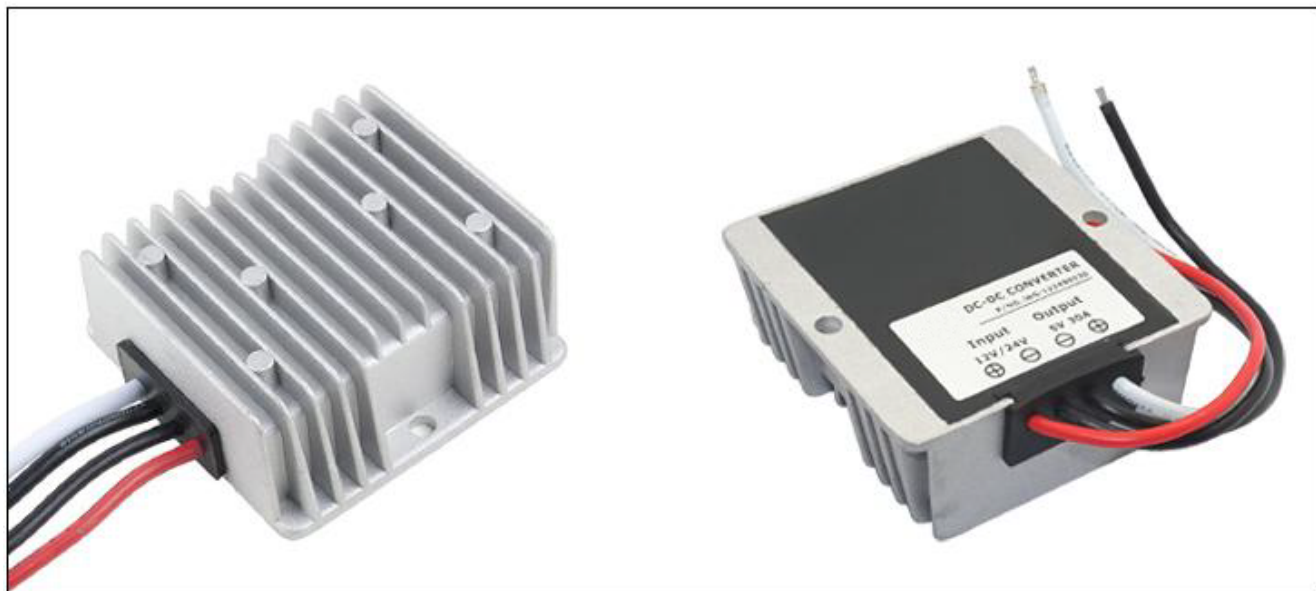


| Input voltage | Output voltage | Output current | Output power | Efficiency | Size       |
|---------------|----------------|----------------|--------------|------------|------------|
| 8-36V DC      | 5V DC          | 30 Amps        | 150 Watts    | 93%        | 74*74*32mm |



### Features

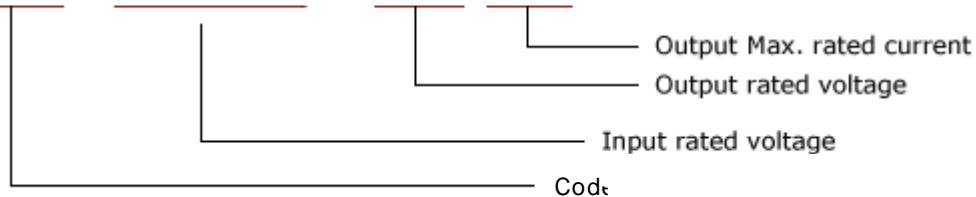
- Design meeting RoHS / CE
- High efficiency: 93% ( @ 12V input )
- Non-isolated between input and output
- Internal capacitor: NCC (high reliability)
- 100% full load burn-in test
- Short circuit, Over load, Over temperature protections
- Waterproof level IP68
- 1 Year warranty

### Applications

- Trucks
- Forklifts
- Buses
- Logging Vehicles
- Electromotor
- Telecommunications
- Boat & Yacht
- LED Marketplaces and so on..

### Model naming method

**WG-1224S0530**



**Specifications**

| Model       | WG-1224S0530                |     |                                  |
|-------------|-----------------------------|-----|----------------------------------|
| Input       | Rated voltage               | V   | 12/24                            |
|             | Voltage range               | V   | 8-36                             |
|             | Efficiency (type)           | %   | 93% @ 12V input; 92% @ 24V input |
|             | Positive cable (red)        | AWG | 14 @ 16.5cm length               |
|             | Negative cable (black)      | AWG | 14 @ 16.5cm length               |
| Output      | Voltage                     | V   | 5                                |
|             | Max. rated current          | A   | 30                               |
|             | Max. rated power            | W   | 150                              |
|             | Voltage regulation          | %   | ±1                               |
|             | Load regulation             | %   | 2                                |
|             | No load loss                | mA  | 30                               |
|             | Ripple & noise              | mV  | 90~110                           |
|             | Positive cable (white)      | AWG | 12 @ 16.5cm length               |
|             | Negative cable (black)      | AWG | 12 @ 16.5cm length               |
| Environment | Working temperature         | °C  | -35 ~ +80                        |
|             | Working humidity            | RH  | 10% ~ 90%                        |
|             | Storage temperature         | °C  | -40 ~ +85                        |
| Function    | Short circuit protection    |     | YES                              |
|             | Over load protection        |     | YES                              |
|             | Waterproof                  |     | IP68                             |
|             | Over temperature protection |     | YES                              |
|             | Over voltage protection     |     | YES                              |
| Mechanical  | Weight                      | g   | 300                              |
|             | Size                        | mm  | 74*74*32                         |
| Other       | Cooling                     |     | Free air convection              |
|             | Packaging                   |     | White box                        |

**Dimension**

