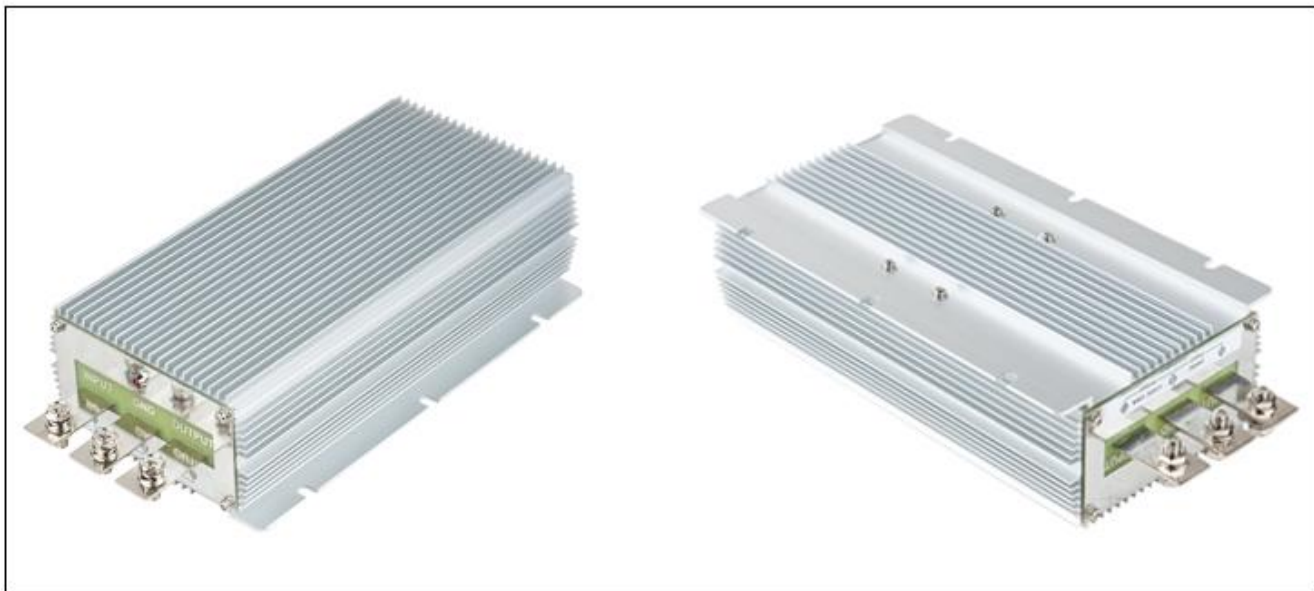


Input voltage	Output voltage	Output current	Output power	Efficiency	Size
10-16V DC	28V DC	40 Amps	1120 Watts	95%	220*127*63mm



#### Features

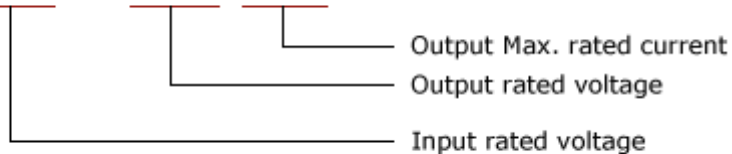
- Design meeting RoHS / CE
- High efficiency: 95% ( @ 12V input )
- Non-isolated between input and output
- Internal capacitor: NCC & NICHICON (high reliability)
- 100% full load burn-in test
- Over load, Over temperature and Over voltage protections
- Waterproof level IP68
- 1 Year warranty

#### Applications

- Trucks
- Forklifts
- Buses
- Logging Vehicles
- Electromotor
- Telecommunications
- Boat & Yacht
- LED Marketplaces and so on..

#### Model naming method

**WG-12S2840**



**Specifications**

Model	WG-12S2840		
Input	Rated voltage	V	12
	Voltage range	V	10-16
	Efficiency (type)	%	95 @ 12V input
Output	Voltage	V	28
	Max. rated current	A	40
	Max. rated power	W	1120
	Voltage regulation	%	±1
	Load regulation	%	2
	No load loss	mA	70 @ 12V input
	Ripple & noise	mVp-p	240 (full load)
Environment	Working temperature	°C	-30 ~ +80
	Working humidity	RH	10% ~ 90%
	Storage temperature	°C	-40 ~ +100
Function	Short circuit protection		NO
	Over current protection		YES
	Waterproof		IP68
	Over temperature protection		YES
	Over voltage protection		YES
Mechanical	Weight	g	2350
	Size	mm	220*127*63
Other	Cooling		Free air convection
	Packaging		Brown box

**Dimension**
