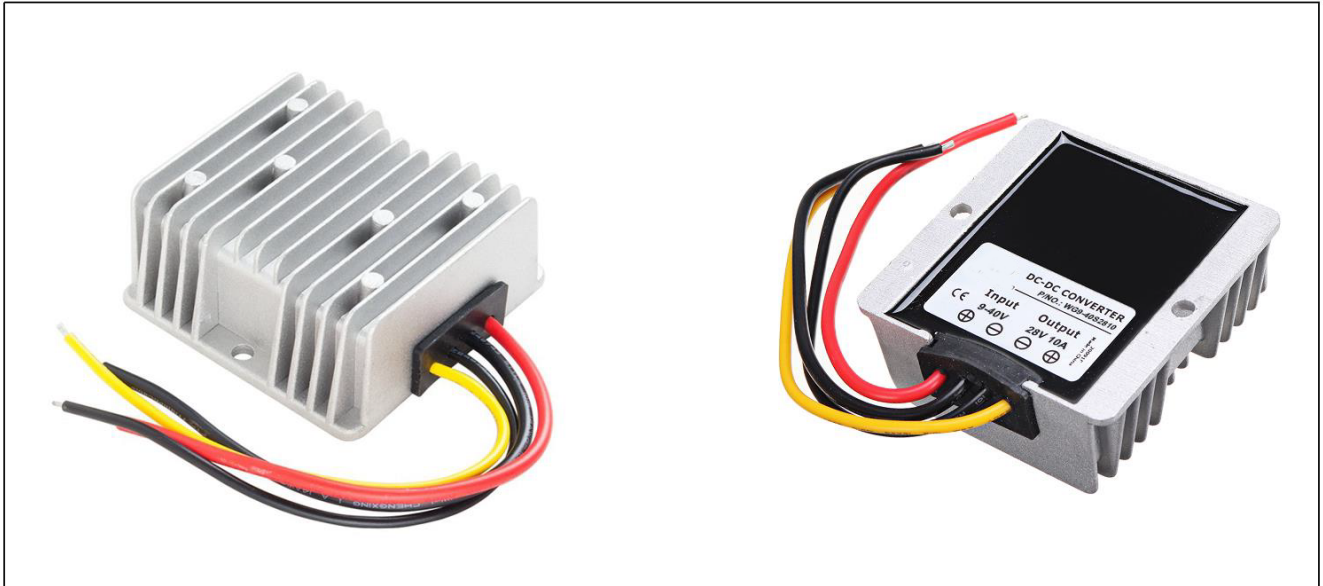


Input voltage	Output voltage	Output current	Output power	Efficiency	Size
9-40V DC	28V DC	10 Amps	280 Watts	97.7%	74*74*32mm



The WG9-40S2810 is a Non-isolated DC-DC converter that uses a synchronous rectification technology, and features high efficiency and power density. It has the dimensions of 74mm x 74mm x 32mm (2.91 in. x 2.91 in. x 1.26 in) and provides the rated output voltage of 28V and the maximum output current of 10A.

### Features

- Design meeting RoHS / CE
- High efficiency: 97.7% (@ 24Vin, 25°C)
- Import capacitors, high reliability
- Input transient absorption protection
- Support -40 °C environment
- 100% full load burn-in test
- Short circuit, Over load, Low voltage protections
- Remote ON/OFF control (optional)
- Waterproof level IP68
- 2 Years warranty

### Applications

- Industrial
- Alternative Energy
- Golf Cart
- Forklift
- Electromotor
- Telecommunications
- Boat & Yacht
- Medical
- LED Marketplaces and so on.

### Model naming method

# WG9-40S2810

**WG** : Model

**9-40** : Input rated voltage

**S** : Single output type

**28** : Output voltage

**10** : Output current

## Electrical Specifications

Conditions: TA = 25 °C (77°F), Airflow = 1 m/s (200LFM), Vin =24V, Vout =28V, unless otherwise specified.

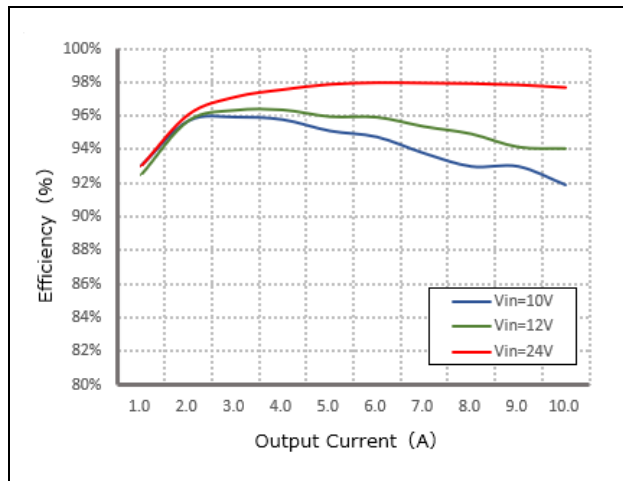
Parameter	Min.	Typ.	Max.	Units	Remarks
<b>Absolute maximum ratings</b>					
Operating ambient temperature	-40	-	+55	°C	
Shell ambient temperature	-40	-	80	°C	
Storage temperature	-55	-	100	°C	
Operating humidity	5	-	95	%	Non-condensing
Atmospheric pressure	62	-	106	Kpa	
Altitude	-	-	4000	m	
Cooling way	-	-	-		Natural cooling
<b>Input characteristics</b>					
Input voltage	9	12/24	40	V	-
Max. input voltage	-	-	44	V	Continuous
Undervoltage shutdown	7	8	9	V	Automatic recovery
Undervoltage recovery	8	9	10	V	Automatic recovery
Max. input current	-	-	34	A	Vin =9V; Iout =10A
No load current	-	67	100	mA	Vin =24V
Positive electrode cable	12	-	-	AWG	If the wire length is greater than 50cm, it is recommended to use a thicker wire diameter.
Negative electrode cable	12	-	-	AWG	
Enable PIN cable	22	-	-	AWG	If the product has this feature
Fuse	-	35	-	A	Input positive has built-in fuse
<b>Output characteristics</b>					
Efficiency	-	97.7	-	%	Vin =24V; Iout =10A
Output voltage	27.8	28	28.3	V	Vin =24V; Iout =10A
Regulator accuracy	-	±2	-	%	
Voltage regulation	-	±2	-	%	
Load Regulation	-	±2	-	%	
Overvoltage protection	-	-	-	V	
Output current	0	-	10	A	
Overcurrent protection	-	13	15	A	Vin=24V
External capacitance	-	-	-	μF	Don't need
Output ripple and noise	-	109	320	mVp-p	Vin =9-40V; Iout=10A, Oscilloscope bandwidth: 20 MHz
Output voltage rise time	-	143	160	mS	
Boot delay time	-	162	200	mS	
Out voltage overshoot	-	1	2	%	Vin =24V, 50%-75% Load step
Over temperature protection	-	-	90	°C	@ shell temperature
Short circuit protection	-	YES	-		Long-term (4 hours) short circuit is not damaged, Hiccup mode
Positive electrode cable	16	-	-	AWG	If the wire length is greater than 50cm, it is recommended to use a thicker wire diameter.
Negative electrode cable	16	-	-	AWG	

Safety and EMC features				
Anti-electric Strength	Input to Output	-	V	Leakage current ≤ 3.5mA, 1min, no breakdown, no arcing
	Input to Shell	≥500	V	
	Output to Shell	≥500	V	
Insulation resistance	Input to Output	≥10	MΩ	Test voltage = 500V
	Input to Shell			
	Output to Shell			
Other characteristics				
Weight	≤ 290		g	
Package	White box			
MTBF	≥200,000		H	Vin= 28V; Iout= 10A
Switching frequency	130±10		KHz	

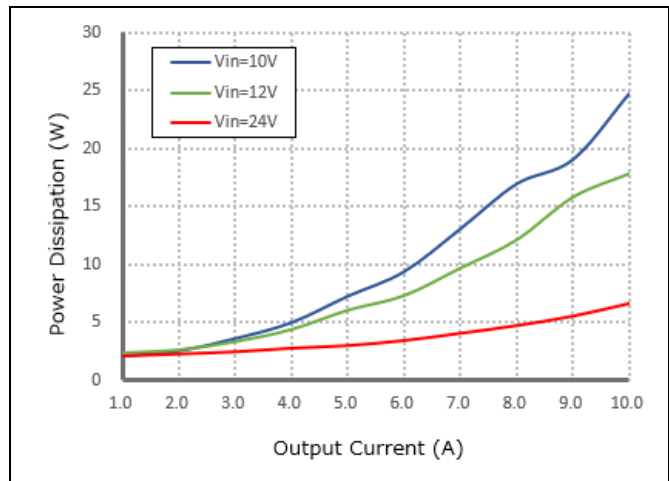
### Characteristic Curves

Conditions:  $T_A = 25^\circ\text{C}$  ( $77^\circ\text{F}$ ),  $V_{in} = 24\text{V}$ ,  $V_{out} = 28\text{V}$ , unless otherwise specified.

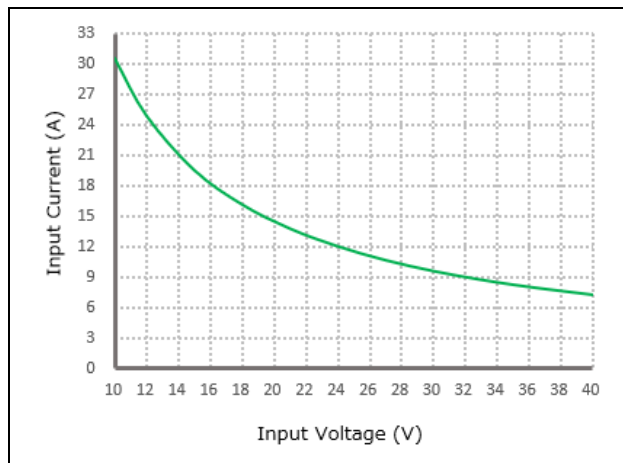
**Figure 1, Efficiency**



**Figure 2, Power dissipation**



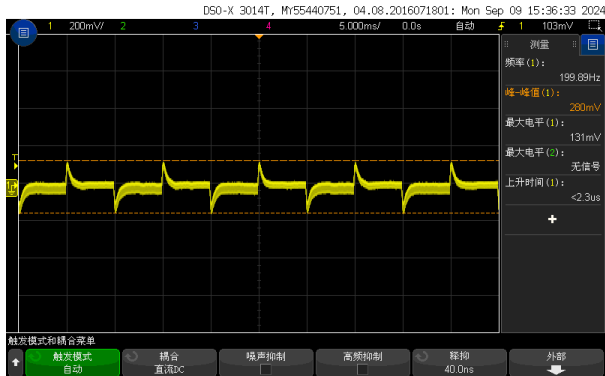
**Figure 3, Input V-I, Iout=10A**



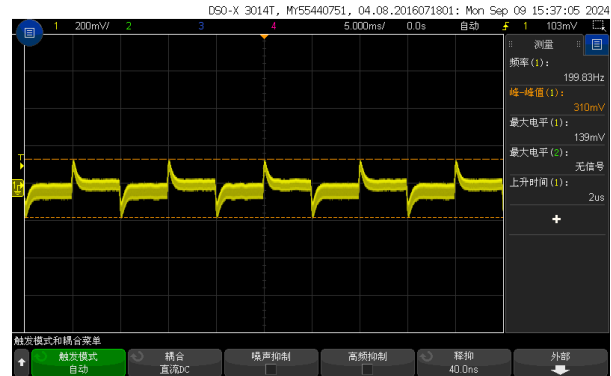
## Typical Waveforms

Conditions:  $T_A = 25^\circ\text{C}$  ( $77^\circ\text{F}$ ),  $V_{in} = 24\text{V}$ , unless otherwise specified.

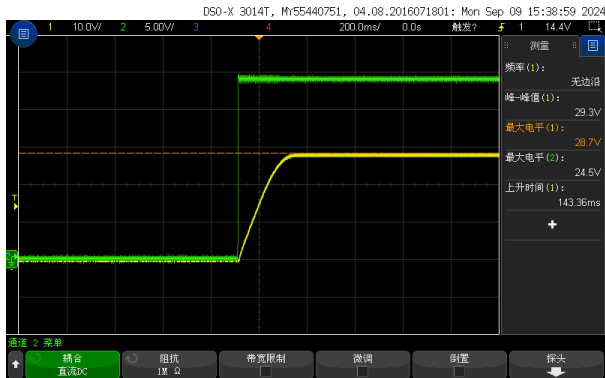
**Figure 4, 25% - 50% load dynamic**



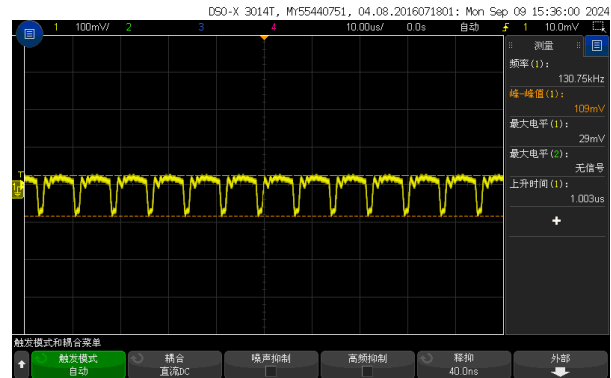
**Figure 5, 50% - 75% load dynamic**



**Figure 6, Output voltage established ( $I_{out} = 10\text{A}$ )**



**Figure 7, Output ripple & noise ( $I_{out} = 10\text{A}$ )**

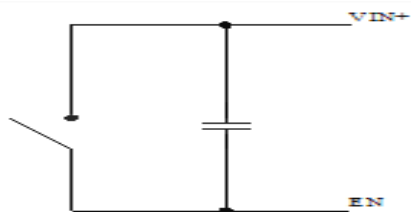


## Feature Description

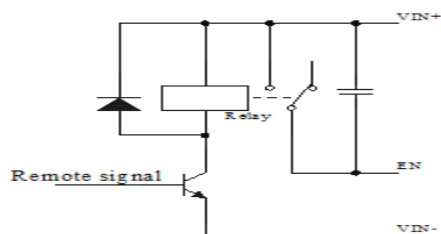
### Remote On/Off (EN) (Optional)

Logic Enable	Low level (0 - 9Vdc)	High level (9-40Vdc)	Left open
Positive logic	Off	On	Off

### Various circuits for driving the EN



Simple control



Transistor control

### Input Undervoltage Protection

The converter will shut down after the input voltage drops below the under-voltage protection threshold for shutdown. The converter will start to work again after the input voltage reaches the input under voltage protection threshold for startup. For the Hysteresis, see the Protection characteristics.

### Output Overcurrent Protection

The converter equipped with current limiting circuitry can provide protection from an output overload or short circuit condition. If the output current exceeds the output overcurrent protection set point, the converter enters hiccup mode. When the fault condition is removed, the converter will automatically restart.

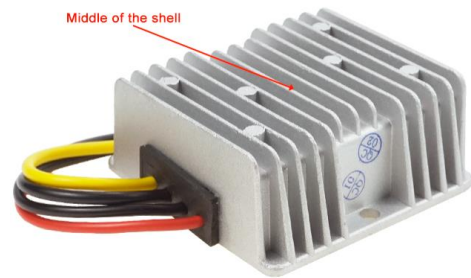
### Overtemperature Protection

A temperature sensor on the converter senses the average temperature of the module. It protects the converter from being damaged at high temperatures. When the temperature exceeds the over temperature protection threshold, the output will shut down. It will allow the converter to turn on again when the temperature of the sensed location falls by the value of Over temperature Protection Hysteresis

## Thermal Consideration

Sufficient airflow should be provided to help ensure reliable operating of the WG9-40S2810

Therefore, thermal components are mounted on the top surface of the WG9-40S2810 to dissipate heat to the surrounding environment by conduction, convection, and radiation. Proper airflow can be verified by measuring the temperature at the middle of the base plate.



## Dimension

